

Suby Bowden + Associates (SOBA) is versatile and creative; providing comprehensive services in architecture, interior design, industrial design, and master planning. SOBA is deeply devoted to environmental issues, community participation, affordable housing, incorporating the appropriate use of technology and materials, and high quality design. Suby Bowden + Associates, above all, is committed to providing elegant and sophisticated art and architecture.

For 23 years, Suby and SOBA have been producing architecture and planning in New Mexico, as well as in Arizona, California, Colorado, Connecticut, Massachusetts, New York, Texas and Vermont. We have successfully designed and built over 200 projects, with one project alone containing over 750 residential and commercial units. Our projects include high-end custom residences, affordable housing villages, mixed-use commercial centers, large-scale industrial complexes, furniture, lighting, holograms, and films.



SUBY BOWDEN + ASSOCIATES

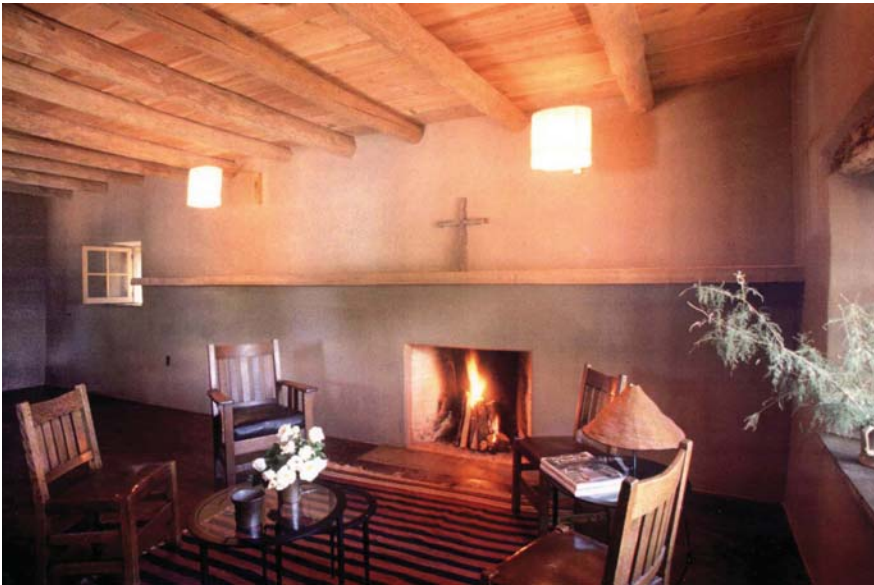
SOBA has been widely published and has received many awards for design excellence, including awards from the National Fannie Mae Foundation Maxwell Award of Excellence (1999), New Mexico's top award for the American Institute of Architects (AIA) the Honor Award for the Landau Residence in Galisteo, NM (2002) and the SFCHT Innovacion Award for sustainable "green" housing; Arroyo Chico (2005).

SOBA has received awards for the past seven years from the AIA for activities on the downtown Santa Fe Railyards Project. SOBA's films and videos have been shown in national and international film festivals, television and publications. In addition, The Whitney Museum, the Museum of Modern Art of New York City, and SITE Santa Fe, have led tours through SOBA's projects.

SOBA's offices are located in Santa Fe's historic Guadalupe district. The firm has an average of ten full time architects and creative staff. We routinely utilize 3D modeling, Revit and Sketch-up for design and AutoCAD for construction documents. SOBA staff also has a fluent capability and mastery of free hand drawing and sketching for concept development and schematic design. We specialize in careful and attentive services.

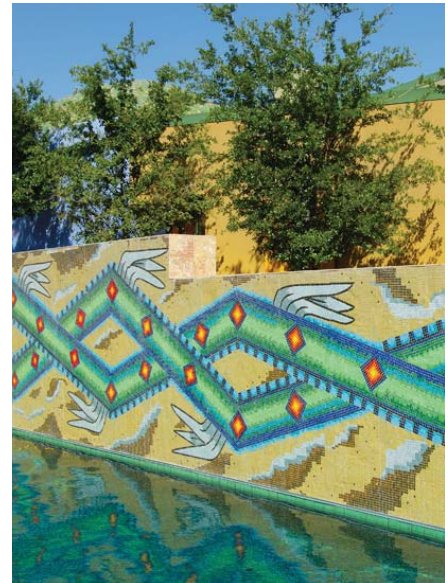


Suby Bowden + Associates



Suby's career spans 34 years of architecture and planning. She has completed over 200 projects, including residential, mixed-use commercial centers, community master planning, financial and religious institutions, affordable housing and historic renovations. Suby has extensive experience with city, state and federal agencies and a thorough understanding of building codes and procedures. In addition, Suby has a long history of community involvement and activism in critical issues as diverse as the Santa Fe Public School District's Citizen's Task Force on Public Education, the Santa Fe Railyard Project, and the 20 year General Plan for the City of Santa Fe. She has also been a long-range Planning Commissioner for the City of Santa Fe and was a co-founder of the Center for Contemporary Arts Teen Center. Suby is a registered Architect in New Mexico, California and Arizona, a registered Interior Designer in New Mexico and is NCARB Certified.

Suby Bowden, Principal



- Clockwise from Top • Federle-Schwartzwaelder Residence • Altman Zen Garden
- Sam Leyba Mural • Santa Fe Railyard Co-Master Planning and Design Guidelines

