

# The Thirty-Nine House

Location: Number 6 Stargazer, La Mirada Subdivision, Santa Fe, NM

Completed: December 2003

Gross Square Feet: 4962

## CONCEPT STATEMENT FOR HOUSE THIRTY- NINE

The 39 house represents an innovative evolution of Southwestern style. Indigenous design elements have been simplified and distilled into a modern expression.

A curved wall establishes the front of the house, echoing a traditional kiva shape—but sharpened. Reminiscent of the punctures of ancient cliff dwellings, twelve square openings, at each end of the curved wall, frame snapshots of the Jemez Mountains to the West. A dynamic wall form, colored with a contrasting earth tone, frames the driveway entry, delineates the interior circulation spine and re-appears on the home's north side.

The 39 house is inspired by traditional Northern New Mexico design elements but materials have evolved, surfaces are transformed. A traditional mud floor now is a coffee-colored concrete floor. Canales and beams are rendered in steel. Interior walls are hard-troweled plasters—polished with beeswax. A woven steel room divider is a reminder of Pueblo basketry. Fireplaces, portals, exposed wood beam ceilings, and skylights, all familiar native elements, are rendered with modern materials contemporary in design, becoming minimalist statements. The natural color palate and choice of surfaces throughout the home preserve the organic warmth fundamental to the region while also adding a contemporary aesthetic. Organic materials include honed slate tile, polished granite, and natural maple cabinetry. Skinned with ochre and two tones of umber stucco, exterior color values blend subtly with the juniper-pinon backdrop, resulting in a structure that merges with the desert landscape.

The home has been designed to take maximum advantage of natural light and ventilation. Interior spaces are connected to portals which bring the outside in. The living room and dining room area is doubled by opening recessed sliding glass walls to the patios. Natural light flows down in intriguing patterns from numerous skylights.

The structure has been designed and sited to manifest a sense of permanence, durability and balance. Punctures have deep reveals to enhance the thickness of the walls. The dwelling is nestled into the site, the rear of the house bermed four feet into the hillside, the front emerging at natural grade.

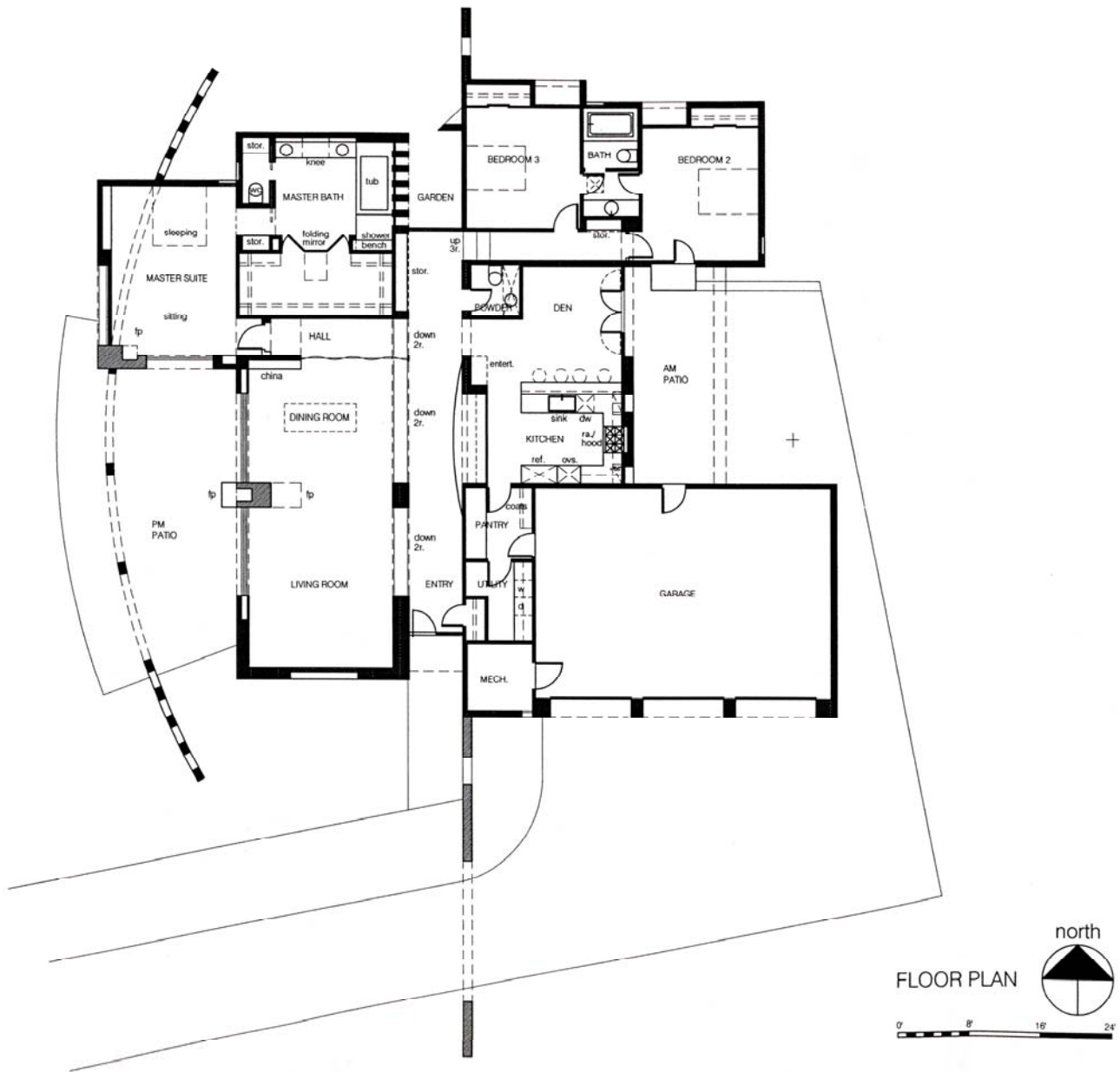
The style is neither contrived, nor themed. Its overall simplicity is true to the elements from which it is constructed and the architectural aesthetic from which it has evolved. The 39 House represents a notable example of emerging, contemporary Santa Fe-style architecture.



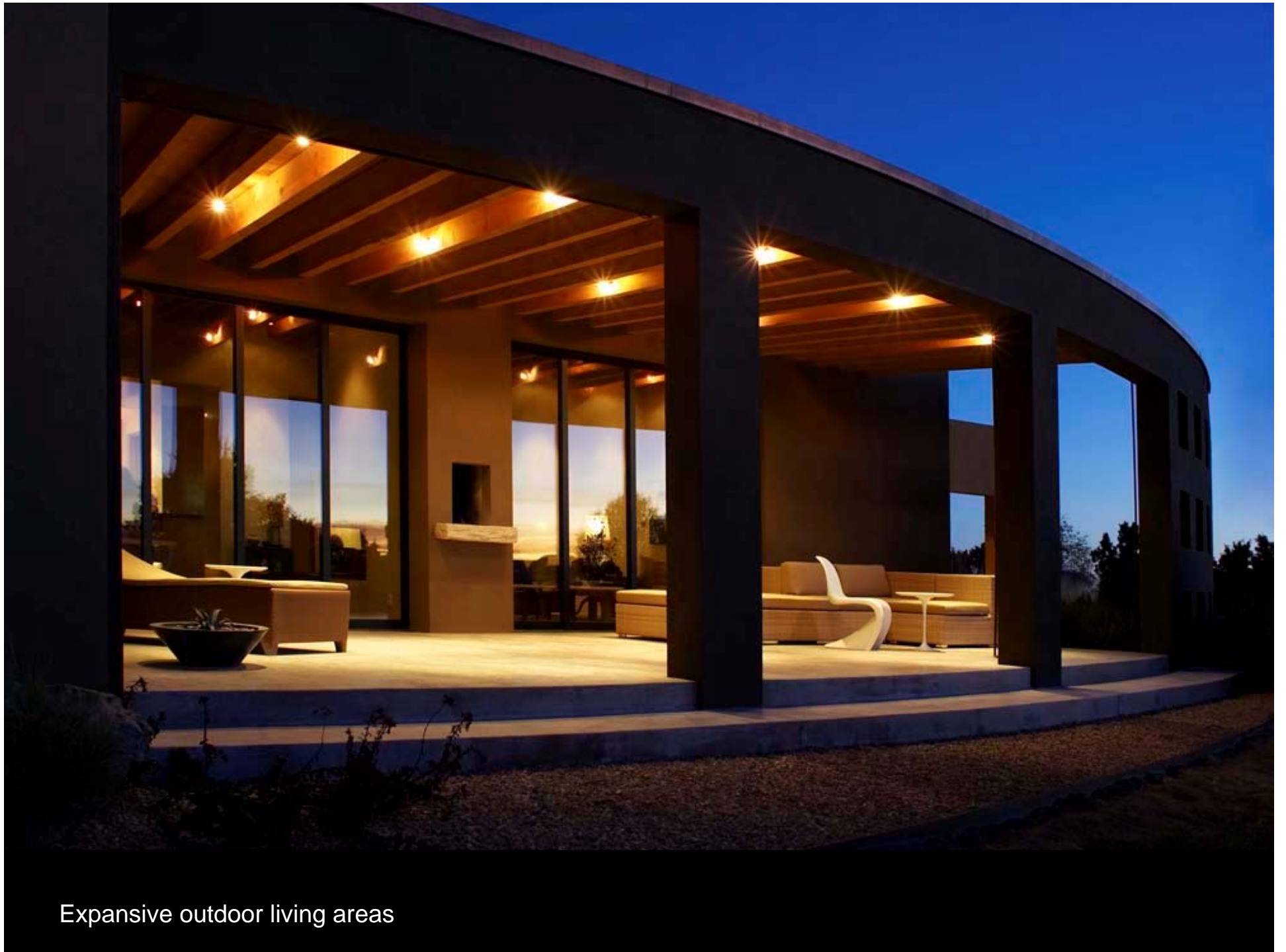
**SITE PLAN NOTES**  
 SETBACK DIMENSIONS SHOWN ARE FOR GRUBBING PURPOSES ONLY. SURVEYOR SHALL LOCATE FOUNDATION.  
 NEW SPOT GRADE SYMBOL: 6763.25  
 EXISTING GRADE CONTOUR  
 REVISED GRADE CONTOUR



Site plan



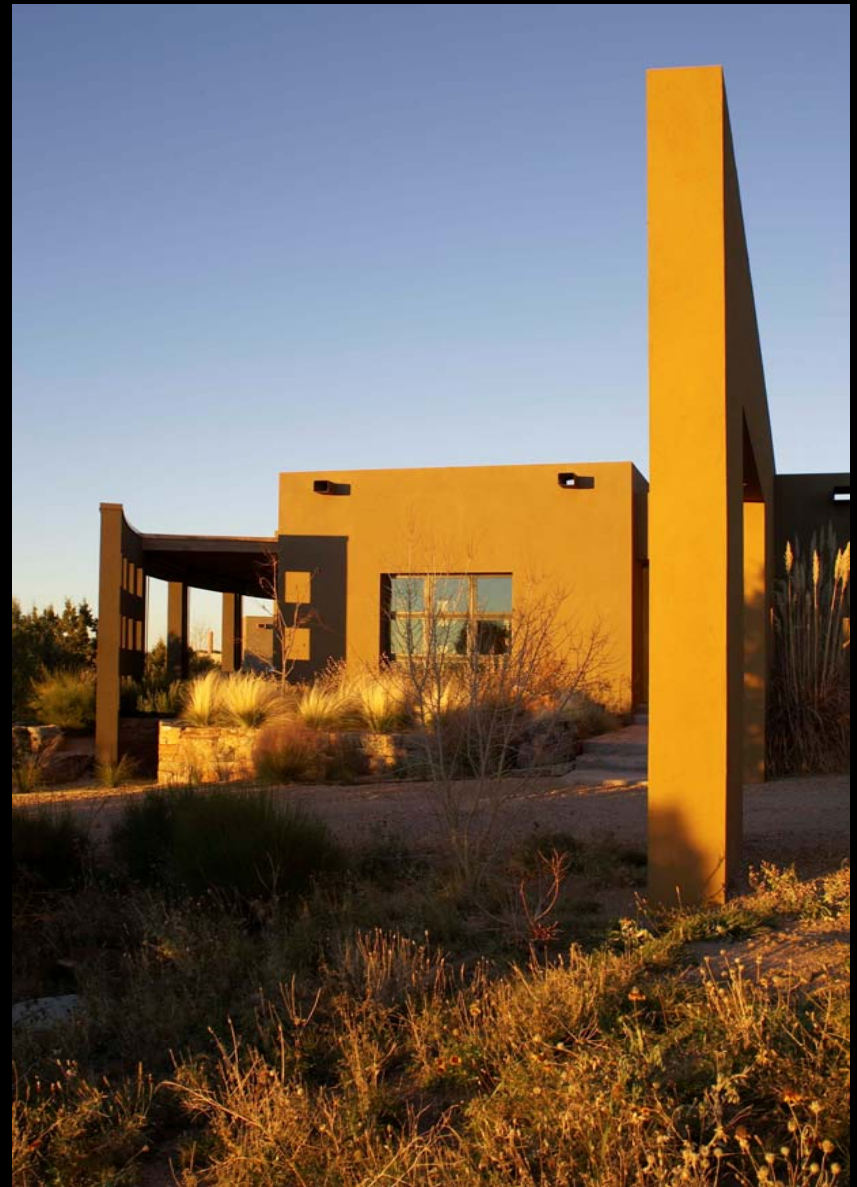
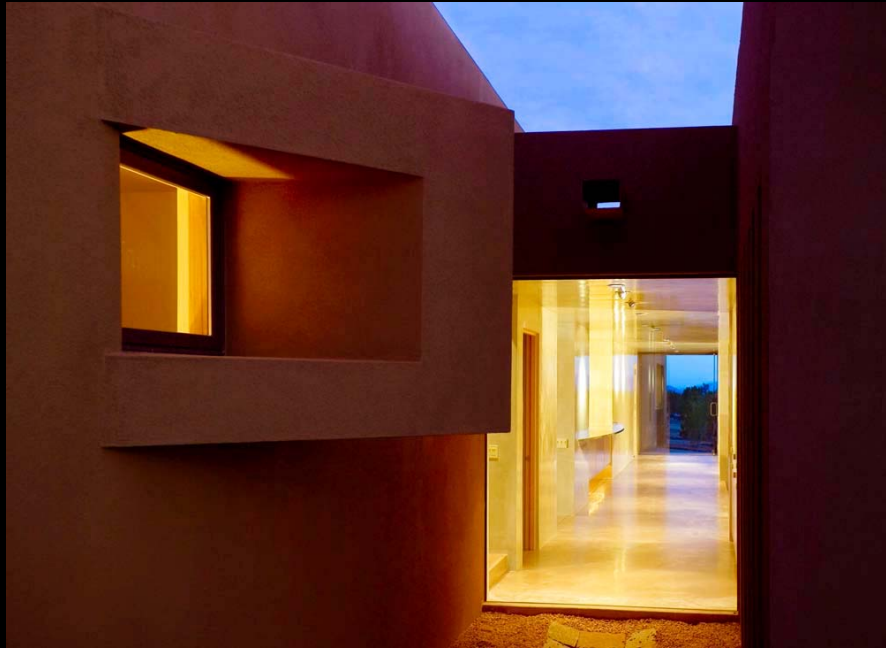
Floor Plan



Expansive outdoor living areas



Dynamic wall form emerging on the north side



Innovative punctures interrupt massing



Exterior earth tones blend with the desert palate



Textural combinations of glass, wood, steel and stone



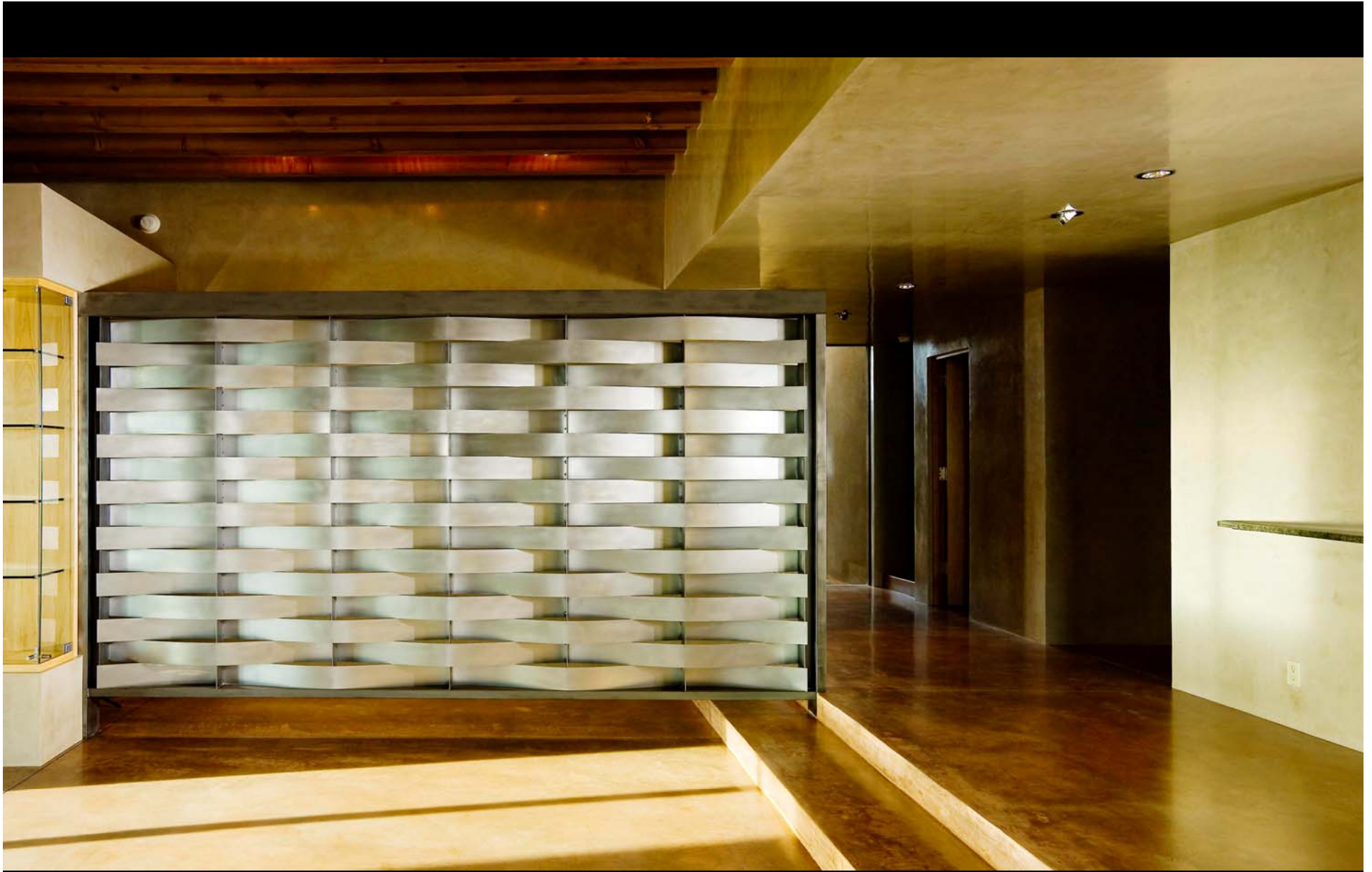
Diverse lighting sources show off varied stone surfaces



Traditional elements refined



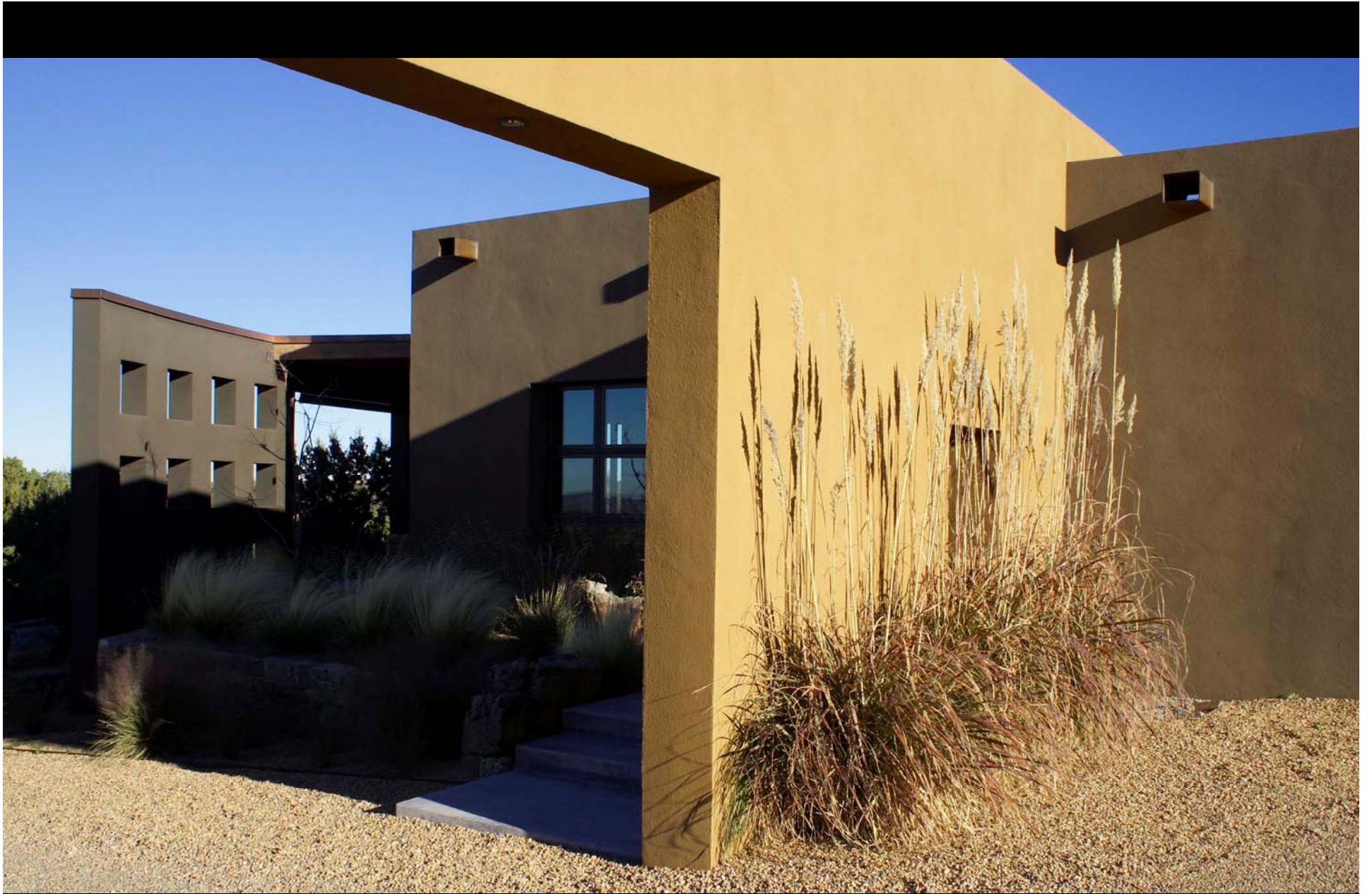
Steel bookcases emerge from curving radius wall



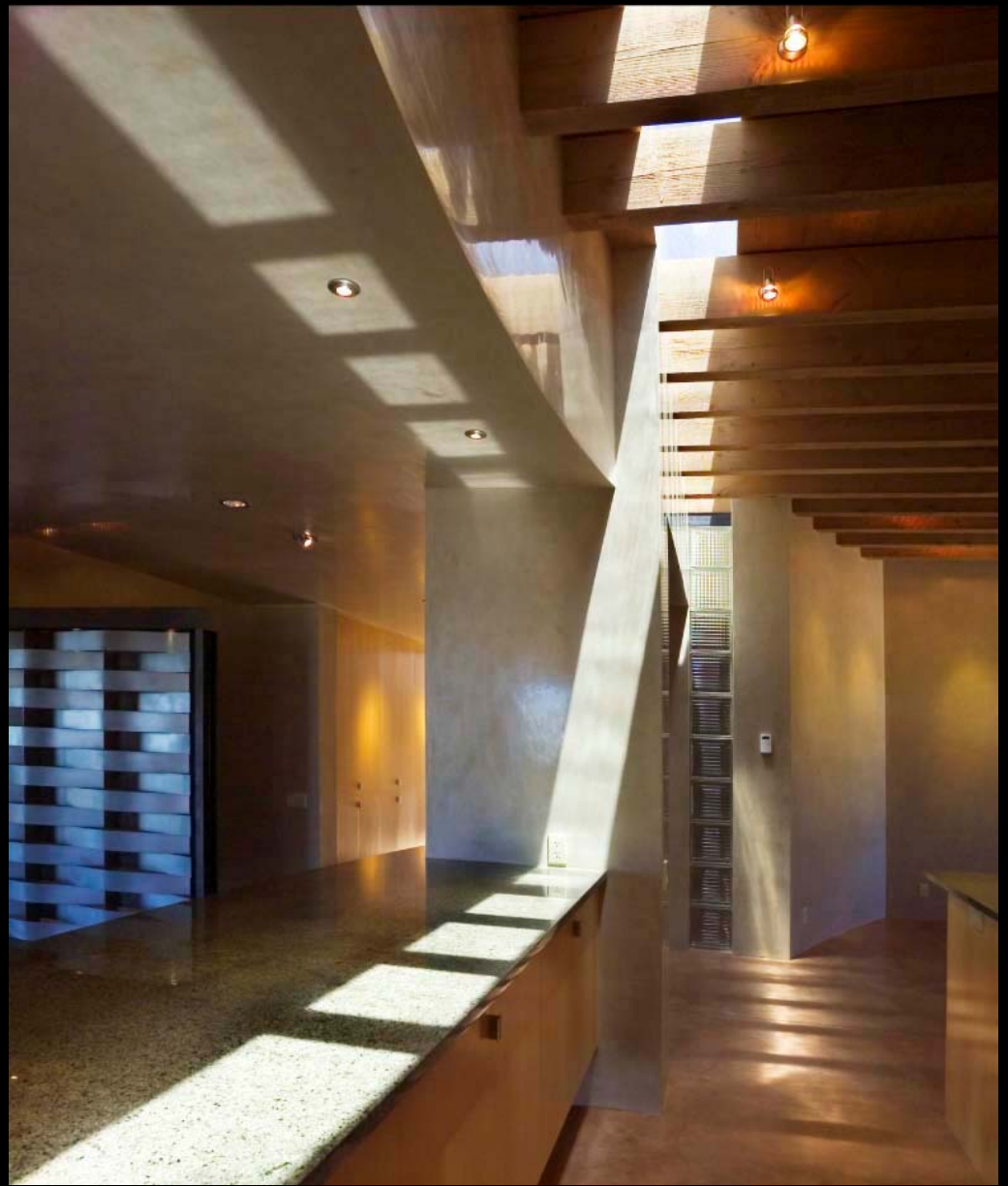
Bees-waxed plaster walls, cocoa colored concrete floors, woven steel divider



Details



Color and texture inspired by the landscape



Natural light streams in intriguing patterns



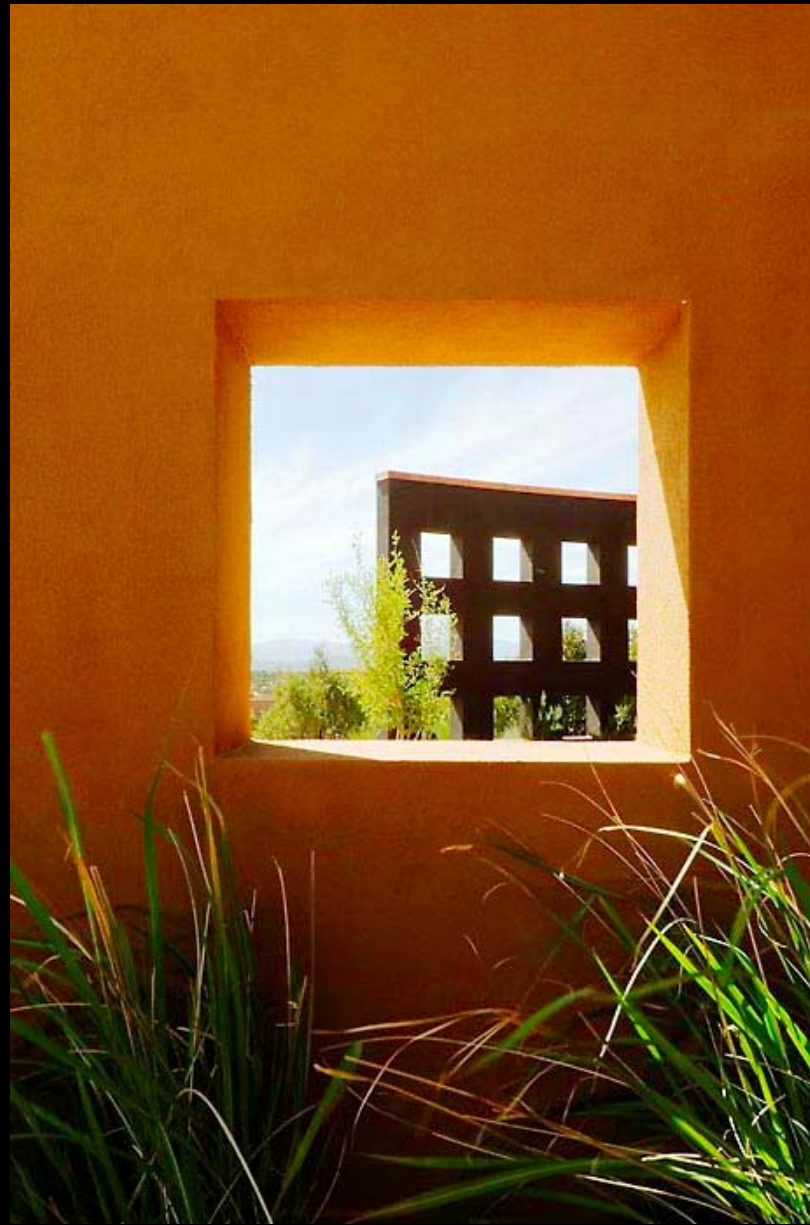
Central corridor views



Siting and generous portals afford panoramic vistas



Opened glass walls invite the outside in



Architectural forms merging with the desert