

# WATTS-RUSSELL HOUSE

santa fe . nm



date of completion / **may 2002**

gross building area / **3470 sf**

# WATTS-RUSSELL HOUSE

santa fe . nm

The Watts-Russell House sits on 10 acres of rolling grassland dotted with pinon pine and juniper. Two barrel vaulted ceilings create the core of the design. Being a home for a music producer with exceptional aural sensitivity, the vaulted ceilings are lined with hemlock boards and acoustical insulation to provide optimal sound quality for the rooms below. Visually, they provide a clean contemporary look while giving a timeless feeling of tranquility and shelter.

The walls of the house are 14" thick masonry, made of reinforced / recycled styrofoam and concrete. The vaults are covered with bonderized steel, giving them a dull neutral gray that makes the house less visible in the landscape. The ends of the vaults are finished in a matching grey stucco color to emphasize the geometry of the barrel vaults. A courtyard, roof deck, and extensive portal help the house reach out into the landscape, providing comfortable outdoor rooms.

Pet dogs adore the roof deck which is perched over the entry and the guest bedroom.



The outdoor courtyard connects to the north portal and the sweep of land beyond. The courtyard is designed to be dog-resistant!



Adjacent to the vault over the study, the roof terrace provides handsome views out over the Galisteo Basin. The terrace flooring is Trex recycled synthetic weather resistant "wood". Powder-coated steel railings provide a non-reflective muted surface..



The north portal provides spectacular views to the Sange de Cristo mountains. The slab chimney of the living room fireplace dominates the north elevation. "



The living and dining area with glazed doors to the north portal.



The living dining area with glazed doors to the south terrace.



The kitchen with the sloped counter base reflected in the island cabinetry. The opening into the kitchen emphasizes the thick-walled architecture.



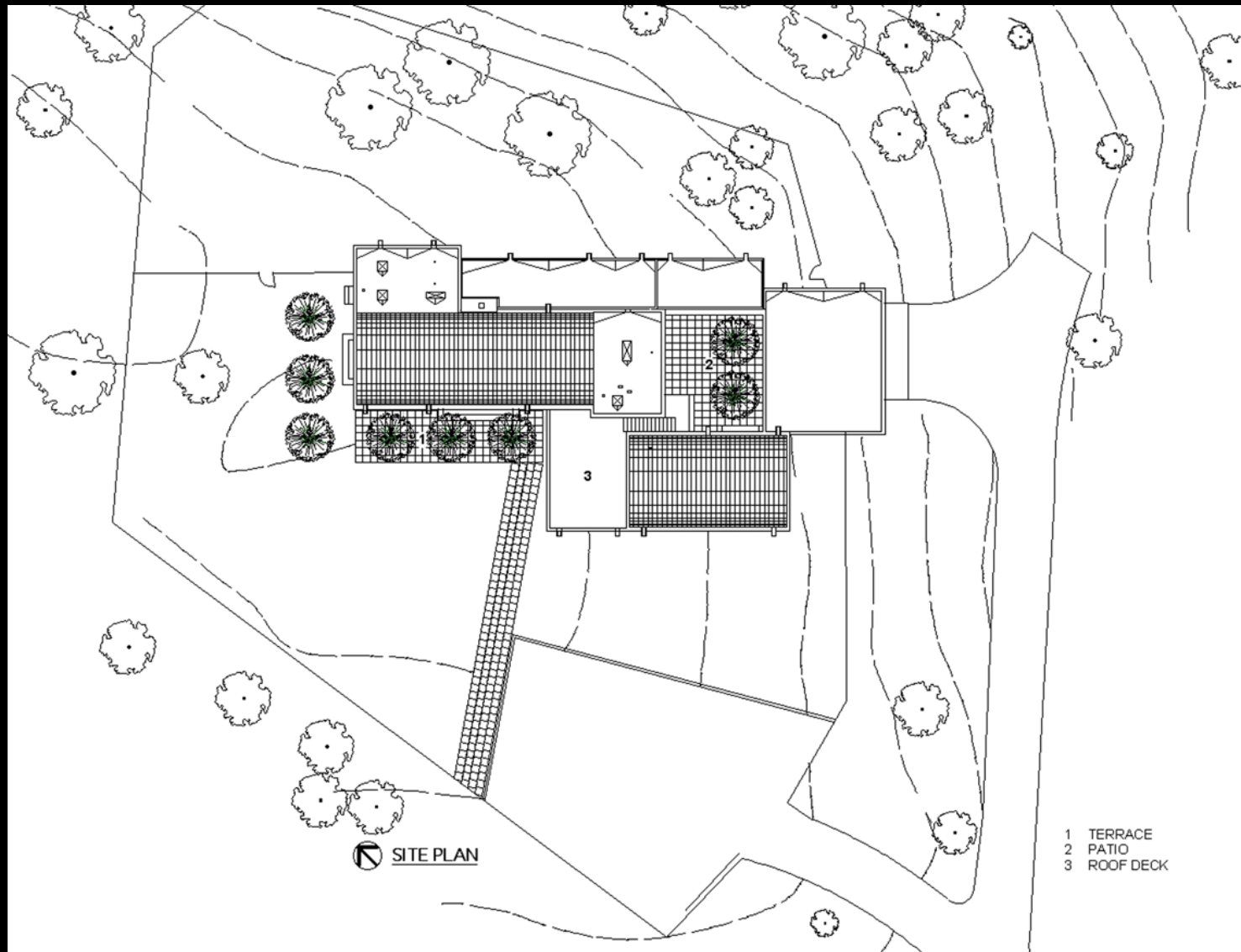
The guest bath has grey tinted plaster. The pull down stair gives access to storage under a part of the vault



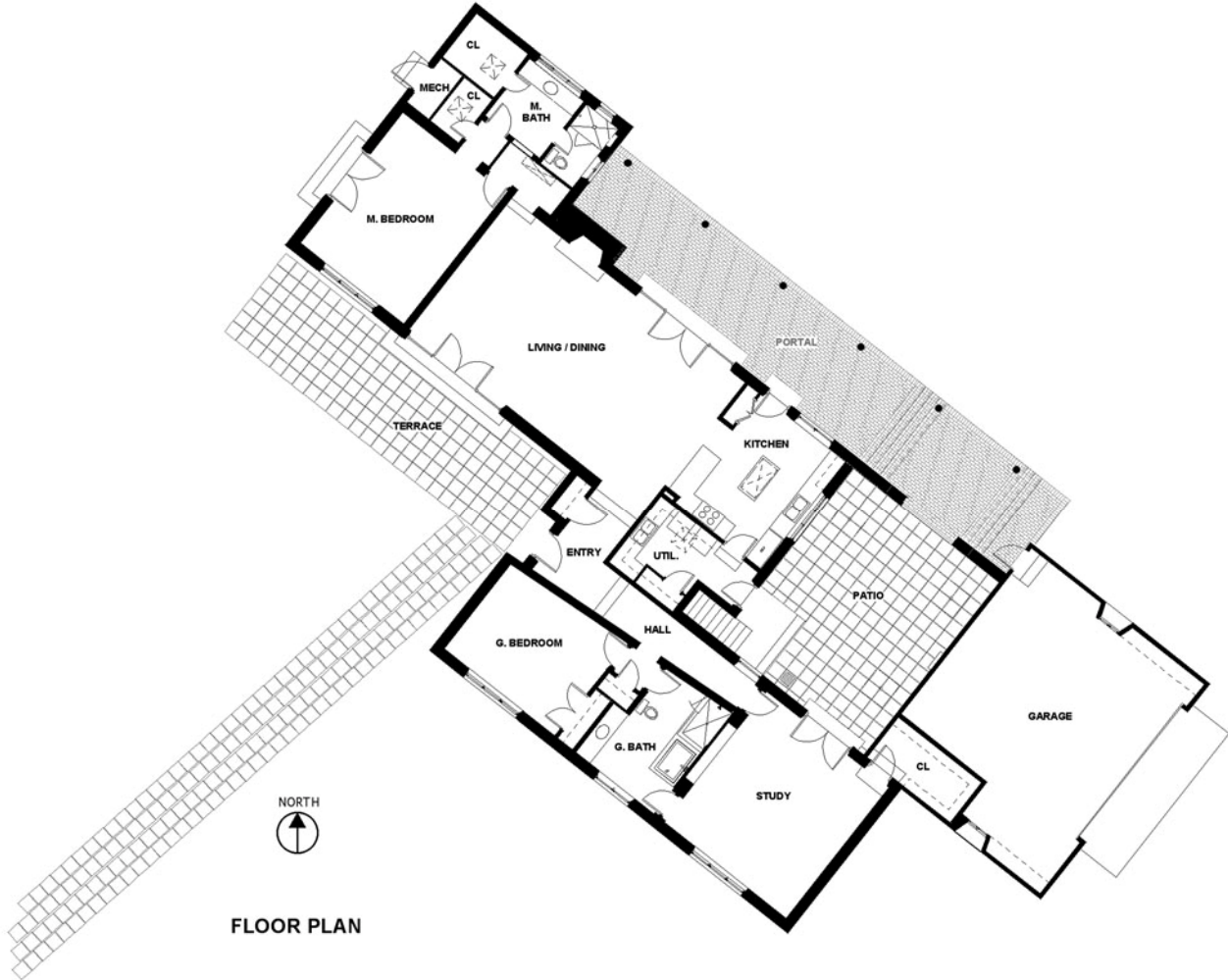
The study opens onto the outdoor courtyard and the view beyond.



The offset parallel vaults dominate the house. The parking court adjoins the walk to the front door. Garage access is separate. The flat roof over the kitchen allows for hidden skylights and vents.



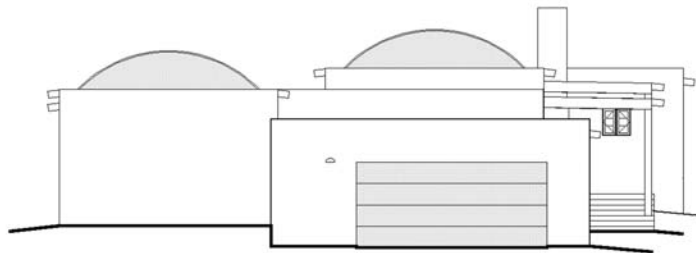
The northeast/southwest orientation captures extraordinary views. The selectively thick walls give a feeling of shelter and permanence.



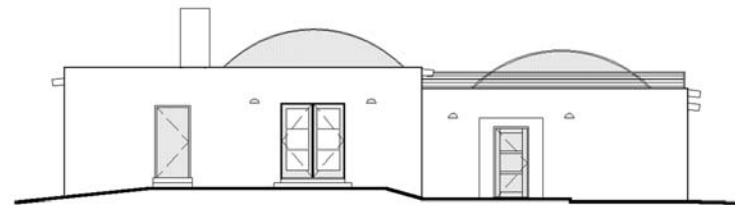
The Watts-Russell House has the vaults set behind a continuous parapet for cohesiveness of the design.



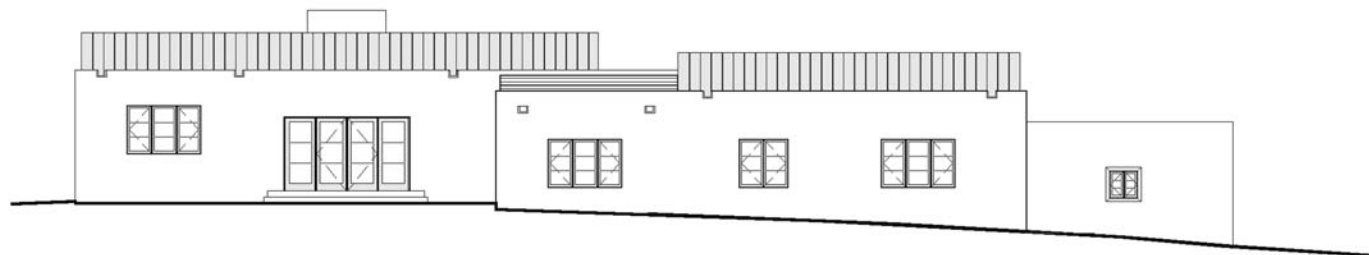
NORTHEAST ELEVATION



SOUTHEAST ELEVATION

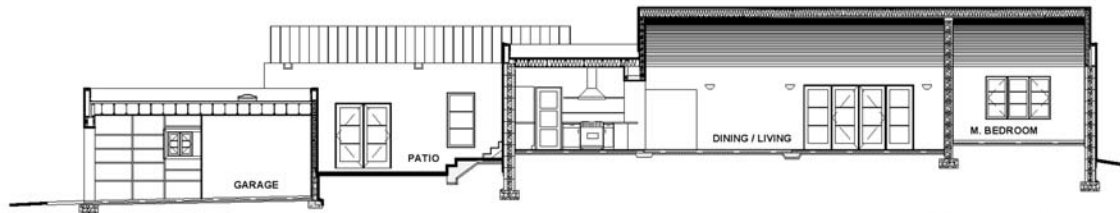


NORTHWEST ELEVATION

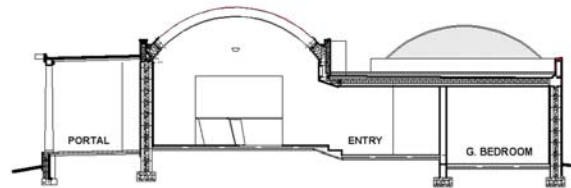


SOUTHWEST ELEVATION

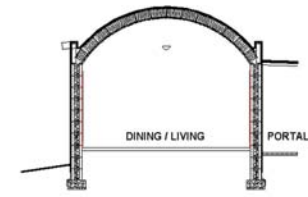
Sections



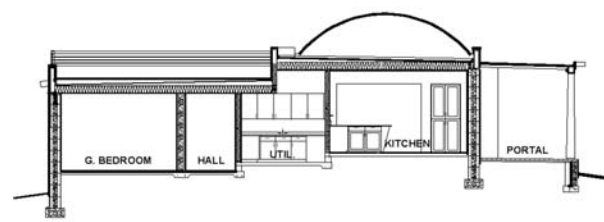
SECTION D



SECTION C



SECTION B



SECTION A