

Tesuque Barns

Location - Tesuque, NM

Completed - November 2006

Building Area

2 - 2,000 sq. ft. barns

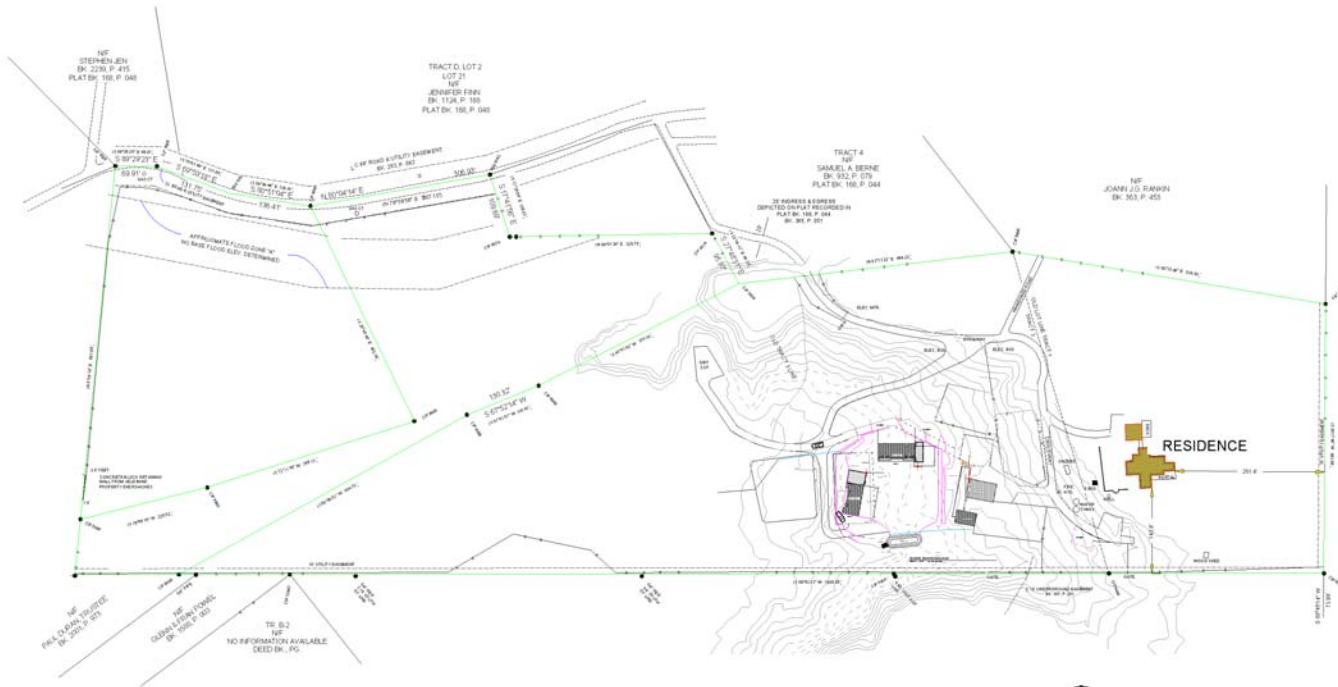
Concept Statement

My client rescues horses and other animals giving them a second chance in life. It is a labor of love. She decided to relocate her animals to her new home in Tesuque New Mexico. She needed barns. The design scheme ties an existing barn to a large courtyard created by two new, larger barns. Barn A and Barn B (the focus of this presentation.) We restored the existing barn. The old corrals were cleaned, restored and incorporated into the scheme. We redesigned and rebuilt a riding arena located just below the new barns.

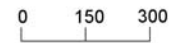
Traditional barns are often dark and have small window openings. We chose a different approach. We incorporated modern architectural techniques and industrial materials along with a minimalist approach to enhance the quality of space, maximize the ability to daylight the barns and minimize the impact of the buildings on the site. We used large windows and clear story windows wherever possible. Large barn doors open to bring the outside in and provide great natural ventilation.

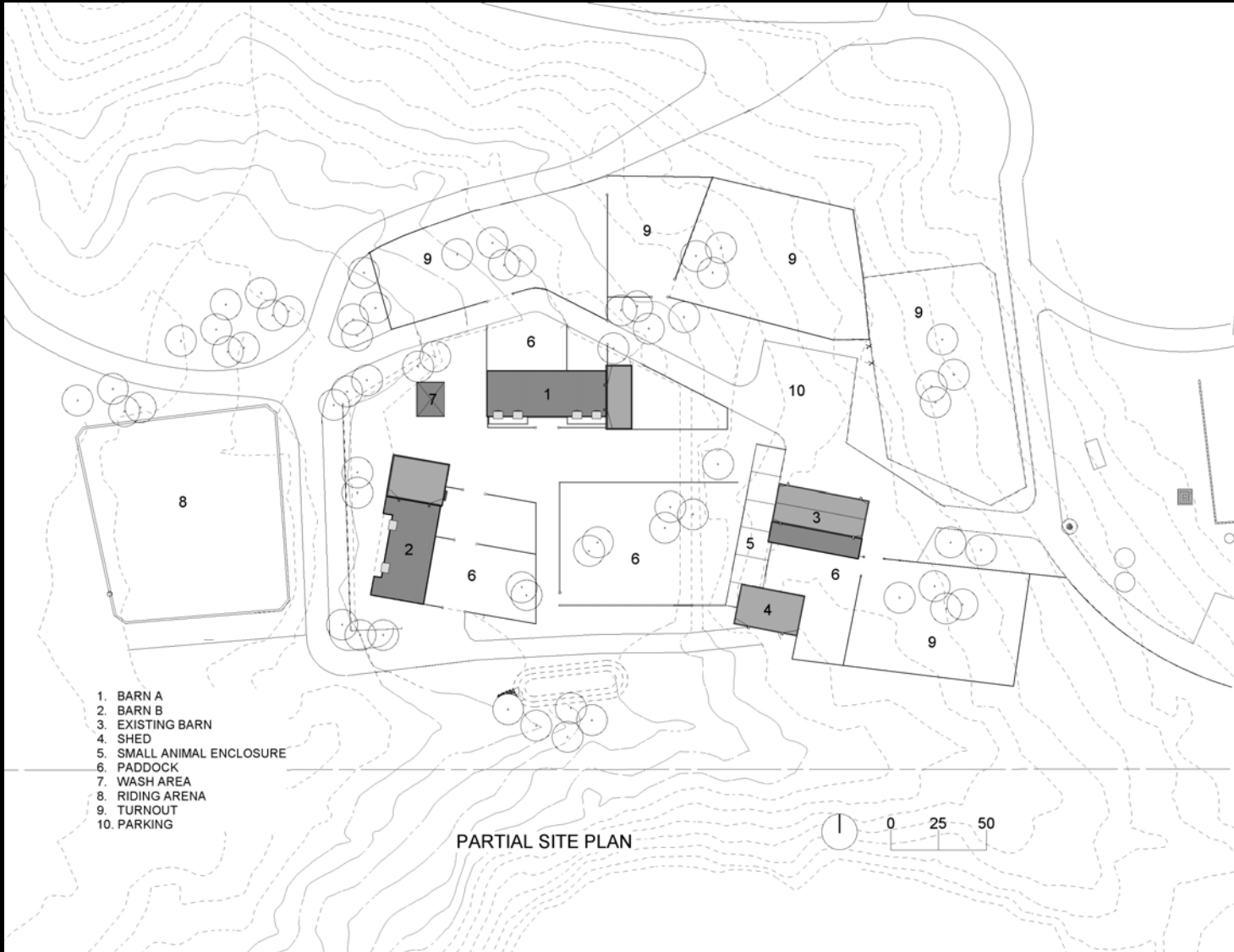
The materials pallet was chosen to match as closely as possible the surrounding colors in the landscape. The stucco is as close to the sand color on the site as we could achieve. The colored concrete block has a purple hue that is similar to the distant mountain ranges. Rusted metal was used because of its beautiful desert color and low maintenance. The more exposed the material is to moisture the more beautiful its patina looks in the desert light.

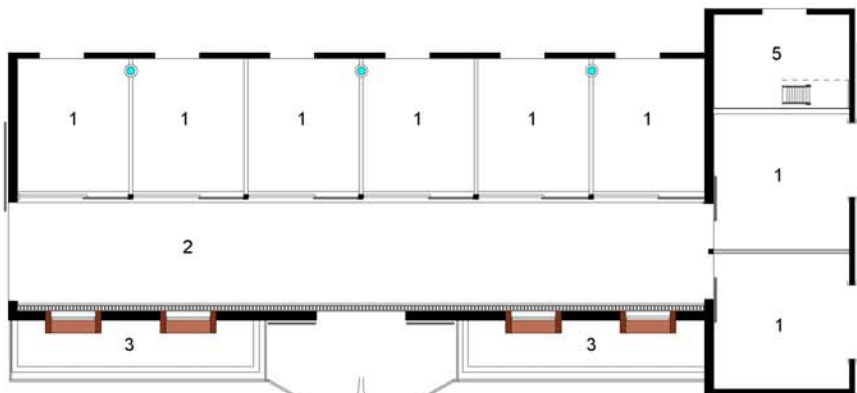
All rain water is collected off the roofs of each building and stored in a 10,000-gallon underground storage tank.



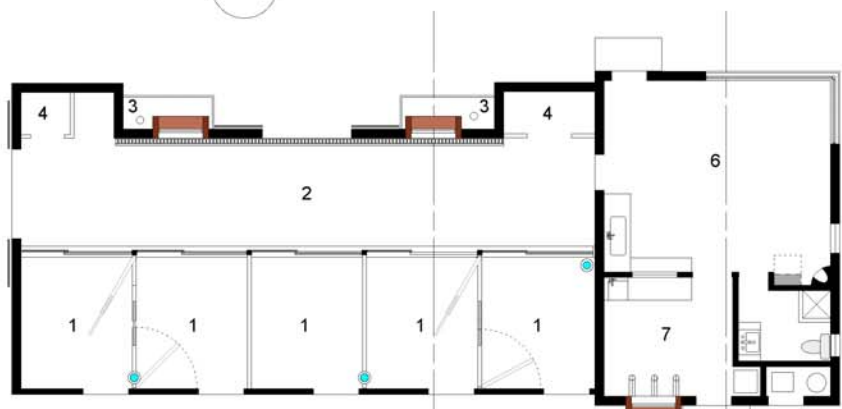
SITE PLAN



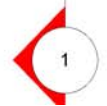
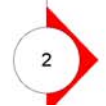




FLOOR PLAN BARN A



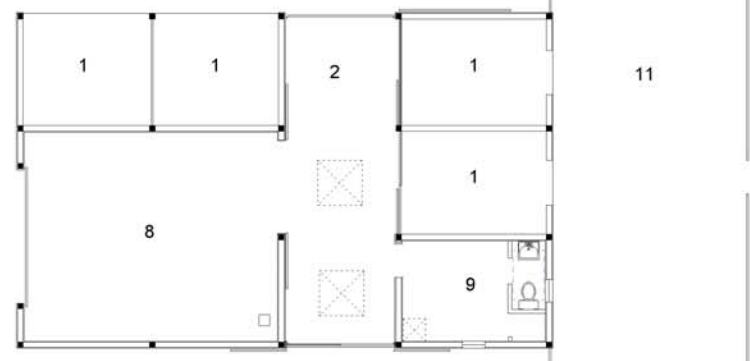
FLOOR PLAN BARN B



- 1. STALL
- 2. AISLE
- 3. RAINWATER COLLECTOR
- 4. FEED STORAGE
- 5. TOOL ROOM
- 6. OWNERS LOUNGE
- 7. TACK ROOM AND LAUNDRY
- 8. WORK SHOP
- 9. WORKERS LUNCH ROOM
- 10. HAY STORAGE
- 11. SMALL ANIMAL ENCLOSURE



SHED



RENOVATED BARN



CONTEXT

Situated in Tesuque, New Mexico the barns are tucked into a 27 acre valley. The area is surrounded by sandy hills, pinon trees and juniper trees.

The eastern edge of the property abuts the Santa Fe National Forest. Santa Fe Ski Basin is viewed on the east side of the property, and the Jemez Mountains are viewed to the west. Our intention was to build with as little impact on the site as possible.



BEN TREMPER PHOTO

VIEWED FROM THE NORTH NEAR THE ENTRANCE TO THE SITE. BARN A AND BARN B ARE IN THE FOREGROUND. THE RIDING ARENA IS TO THE RIGHT.



VIEWED FROM THE NORTH NEAR THE ENTRANCE TO THE SITE.

BEN TREMPER PHOTO



BEN TREMPER PHOTO

VIEW FROM THE NORTH, BARN A LEFT, BARN B AND THE OWNER'S LOUNGE IN THE FOREGROUND



BEN TREMPER PHOTO

VIEW FROM SOUTH. PHOTOGRAPH SHOWS SOUTH ELEVATION OF BARN A IN THE FOREGROUND AND THE SOUTH EAST ELEVATION OF BARN B ON THE LEFT. BARN B IS THE FIVE STALL BARN WITH THE OWNERS LOUNGE.



PETER VITALI PHOTO

SOUTH ELEVATION OF BARN A. PHOTOGRAPH SHOWS WATER COLLECTORS AT BASE OF WALL. WATER IS HARVESTED FROM ALL THE ROOFS.



PETER VITALI PHOTO

HORSES IN PADDOCK NEXT TO BARN B



BEN TREMPER PHOTO

EXTERIOR ELEVATION OF OWNERS LOUNGE BARN B



BEN TREMPER PHOTO

INTERIOR OF OWNERS LOUNGE WITH LOFT BARN B



PETER VITALI PHOTO

NATURAL LIGHT FILLS THE STALL AREA. STALL FRONTS, DOORS AND PARTITIONS ARE POWDER COATED STEEL. THEY WERE CUSTOM MANUFACTURED IN KENTUCKY.



BEN TREMPER PHOTO

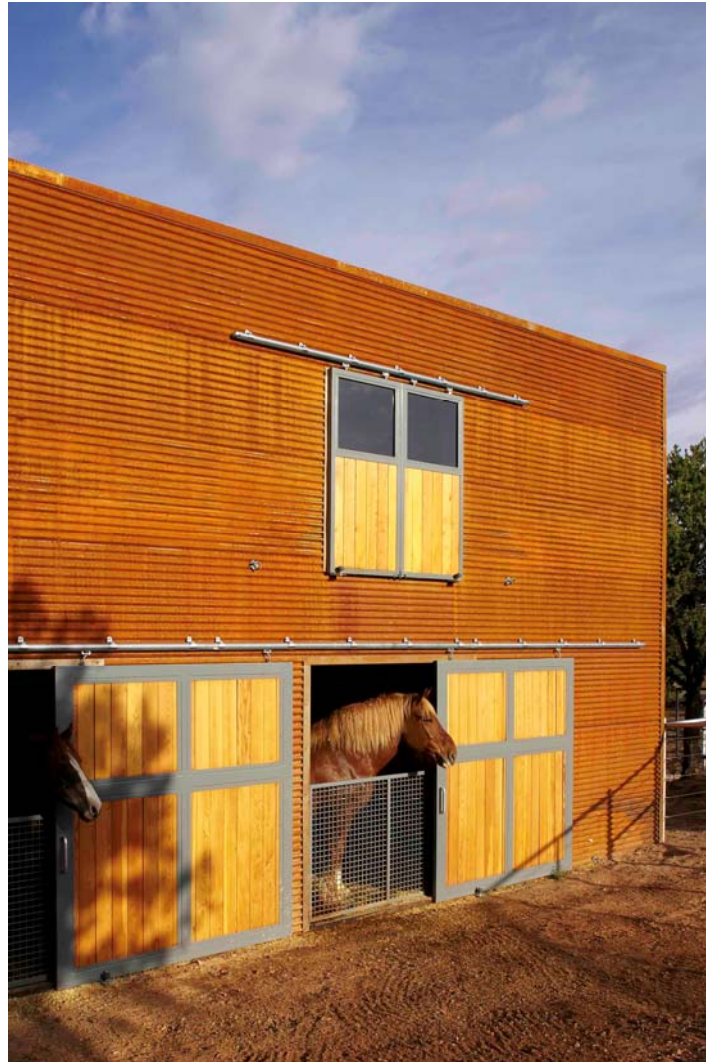
INTERIOR STALLS AND STALL DOORS



BEN TREMPER PHOTO

EXTERIOR STALL DOORS AND CLEAR STORY WINDOW

EAST END OF BARN A. TWO LARGE STALLS FOR DRAFT HORSES WERE INCORPORATED. FEED STORAGE IS IN THE LOFT ABOVE THE STALLS



BEN TREMPER PHOTO



PETER VITALI PHOTO

TWO OF FIVE NEW STALLS INCOORPORATED INTO THE RENOVATED BARN



PETER VITALI PHOTO

WEST ELEVATION OF BARN B VIEWED FROM THE RIDING ARENA. OWNERS LOUNGE IS ON THE LEFT. THE NEW SHED IS IN THE BACKGROUND.



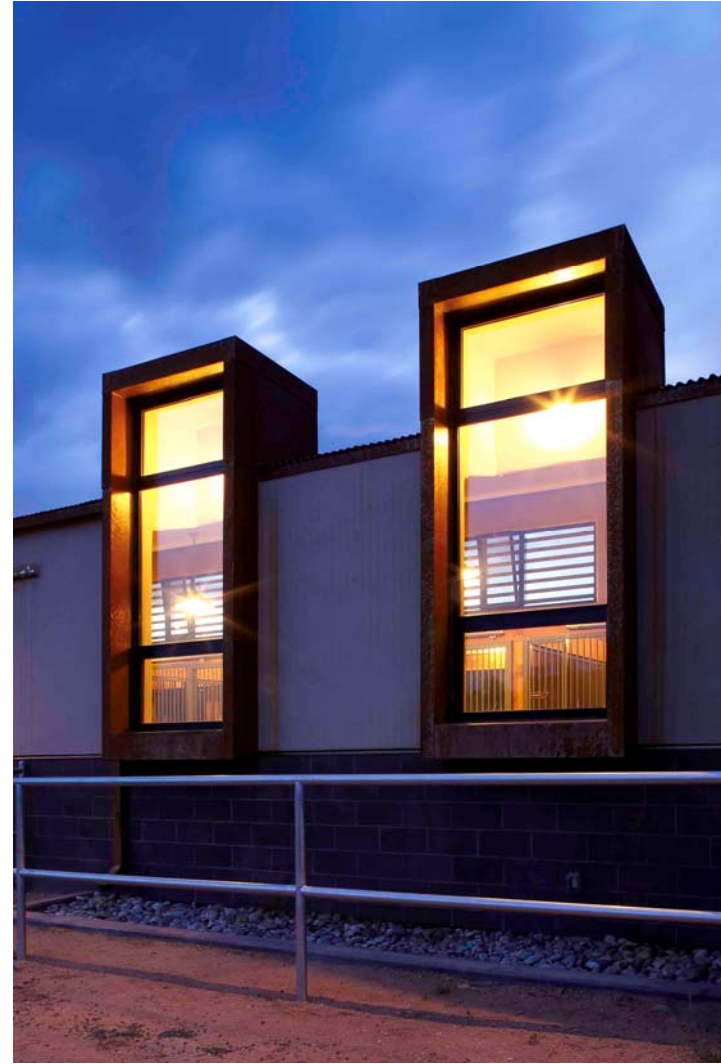
EARLY EVENING PHOTOGRAPH OF SOUTHEAST ELEVATION OF BARN B.

BEN TREMPER PHOTO



BEN TREMPER PHOTO

WEST ELEVATION OF BARN B.



BEN TREMPER PHOTO

SOUTH ELEVATION OF BARN A.