

Toney Anaya State Office Building

Santa Fe, New Mexico

March, 2004

100,000 Square Feet

2007 Jeff Harnar Award for
Contemporary Architecture

The 100,000 s.f. facility houses state offices in the West Capitol Complex located in Santa Fe, New Mexico. The project includes an underground parking structure, plus a new plaza that will become the centerpiece of this developing campus. The floor plan is designed for maximum flexibility with a raised computer floor throughout the building.

The building was designed to become the flagship structure for the new campus. It relates well to the nearby State Archive Building by using a unifying color palette and a matching level of quality. One of the project goals was to express New Mexico's broad and diverse cultural and historic origins using a contemporary vocabulary and avoiding the clichés of traditional details.

The building has a stepped massing that is reminiscent of Pueblo architecture and colors taken from the surrounding landscape. The cafeteria has a circular design to suggest an important connection to our native architecture, recalling the form of the kiva, torreon and ancient Anasazi communities. The large open-air mall that passes through the building is inspired by the zaguan found in traditional Spanish settlements. The zaguan has two functions. It serves as a view portal or window into the future campus. Secondly, resting below the zaguan are some very large utilities that could not be relocated or disturbed, and the use of an open passage over this area avoided having the mass of a building there.

Water is a precious resource in a high desert climate, so it was logical to have it serve as an inspiration for the interior motif of the building. To this end, the carpet is inlaid with an abstract map of the major waterways in New Mexico. The "zig-zag" pattern etched into the glass guardrails has a dual symbolic reference to both the flow of water and the profile of the New Mexico mountains and valleys that the water helped shape. The colors in New Mexico's ancient material palette are recalled in the interior of the lobby using Anasazi stonework, natural wood and floor tile. Located below the staircase is more stonework that forms both a planter on one side and a cascading water feature on the opposite side that symbolizes the acequia that is an integral part of our agricultural past and present.

The interiors of the building's design are also inspired by the state's rich history and natural resources. The two-story lobby's centerpiece is a monumental circular stairway that is 24 feet in diameter. The helical stair has a glass handrail that is shrouded with an art sculpture that was created through New Mexico's "One Percent for the Arts" program.

Water conservation is very important to our state and is demonstrated in the design of the water harvesting roof above the circular entrance ramp to the underground parking structure. This water will be used to irrigate the xeriscape plants that grace the building's perimeter.

Toney Anaya State Office Building

xeriscape plants

desert vegetation

Exterior



Toney Anaya State Office Building



Exteriors

100,000 square foot building

Toney Anaya State Office Building

centerpiece of this
developing campus



Exterior

Toney Anaya State Office Building



Exterior

designed for maximum flexibility

Toney Anaya State Office Building



Exterior

unifying color palette

Toney Anaya State Office Building

project goal

express New Mexico's broad and diverse cultural and historic origins

using a contemporary vocabulary and avoiding the clichés of traditional details

Exterior



Toney Anaya State Office Building



cascading water feature

symbolizes the acequia

Interior

Toney Anaya State Office Building

“zig-zag” pattern etched into the glass guardrails

dual symbolic
reference

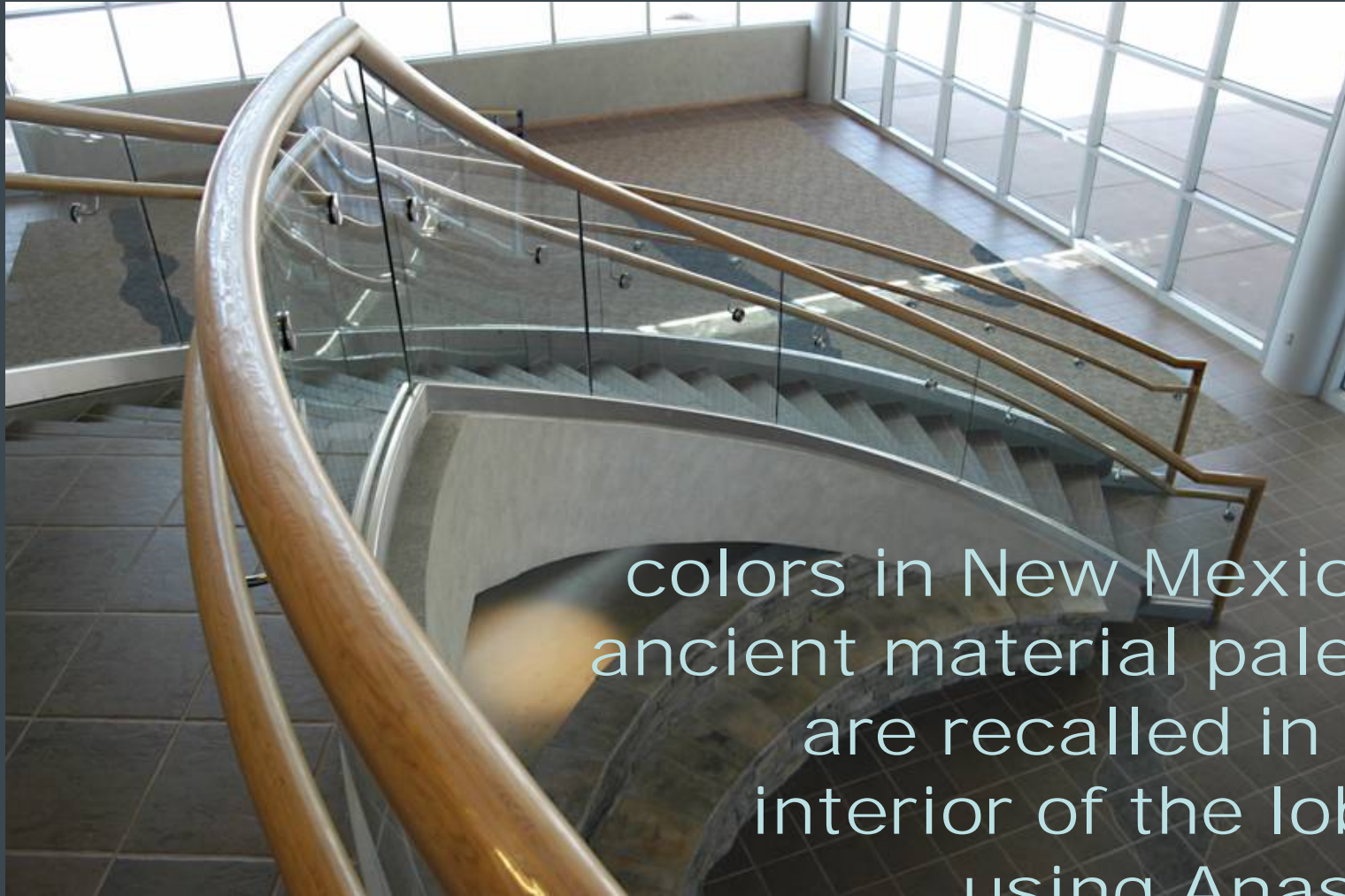


flow of
water

Interior

profile of the NM
mountains & valleys
that the water
helped shape

Toney Anaya State Office Building



colors in New Mexico's
ancient material palette
are recalled in the
interior of the lobby
using Anasazi
stonework, natural wood
and floor tile

Interior

Toney Anaya State Office Building

zaguan found in
traditional Spanish
settlements



inspiration for the interior
motif of the building

Interior

Toney Anaya State Office Building

carpet is inlaid with an abstract map of the major waterways in New Mexico



Interior

Toney Anaya State Office Building

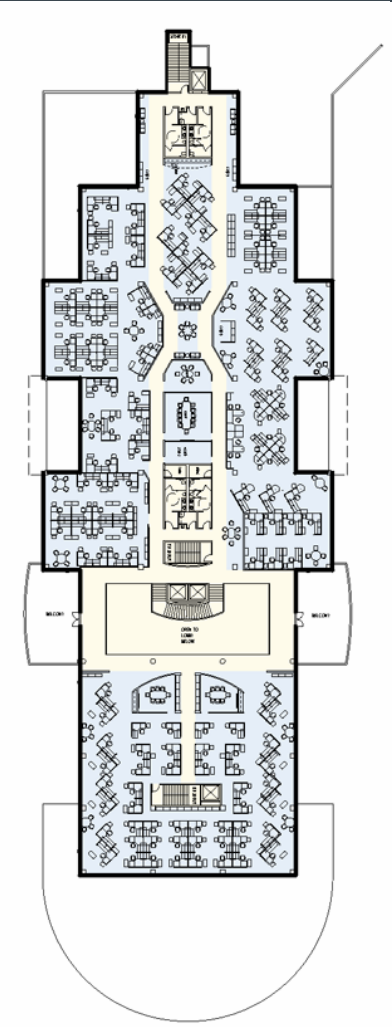
stepped massing

reminiscent of
Pueblo architecture



Drawings

Toney Anaya State Office Building



SECOND FLOOR PLAN

32,470 G.S.F.
30,730 S.F. Rentable Area

Drawings

Toney Anaya State Office Building

circular design



Drawings

suggest an important connection
to our native architecture

Toney Anaya State Office Building

interior design inspired by the state's rich history and natural resources



Drawings

Toney Anaya State Office Building

open-air mall

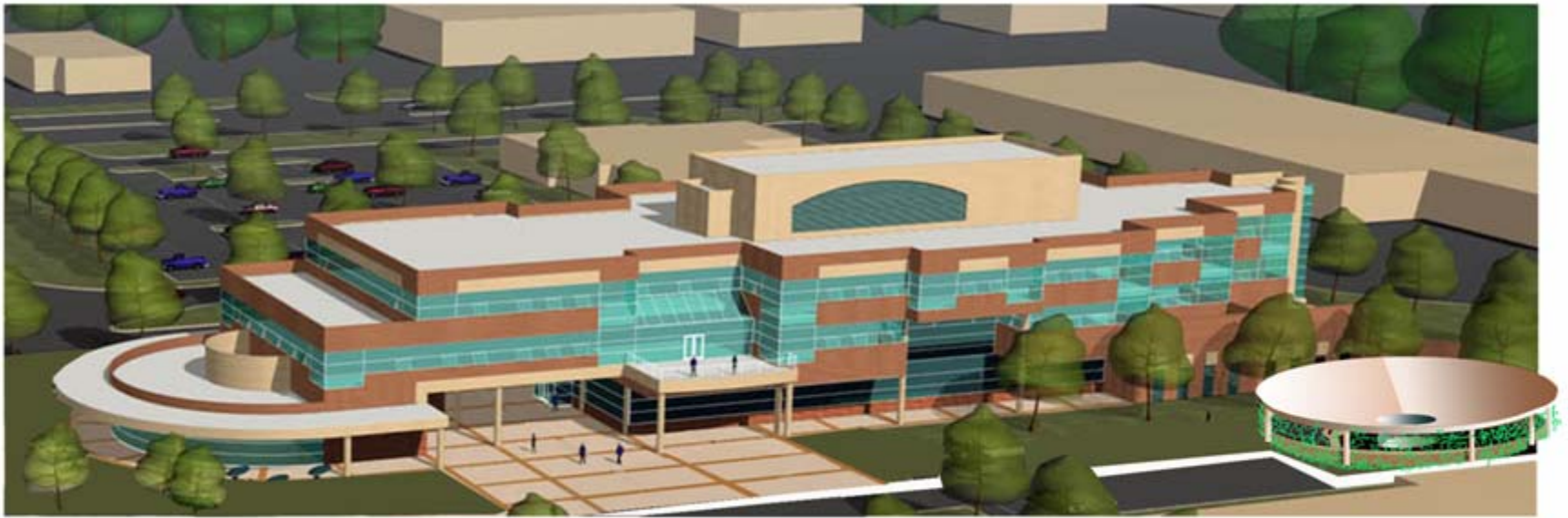


Drawings

view portal into the future campus

Toney Anaya State Office Building

water harvesting roof above
the circular entrance ramp



Drawings

Toney Anaya State Office Building

Santa Fe, New Mexico